

PRODUCT INFORMATION PACKET

marathon[®]
Motors

Model No: 056B34D5327
Catalog No: J023
3,3450,DP,56C,1/60/230 (USE 5KCR48TN2142T)
Jet Pump Motors



Regal and Marathon are trademarks of Regal Rexnord Corporation or one of its affiliated companies.
©2021 Regal Rexnord Corporation, All Rights Reserved. MC017097E

RegalRexnord

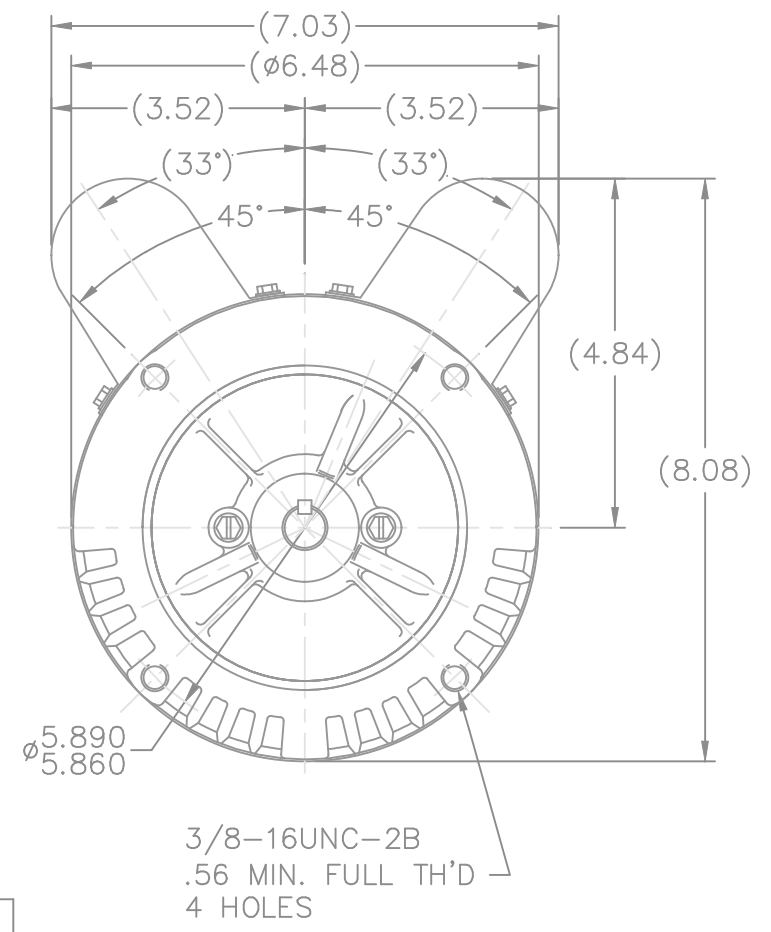
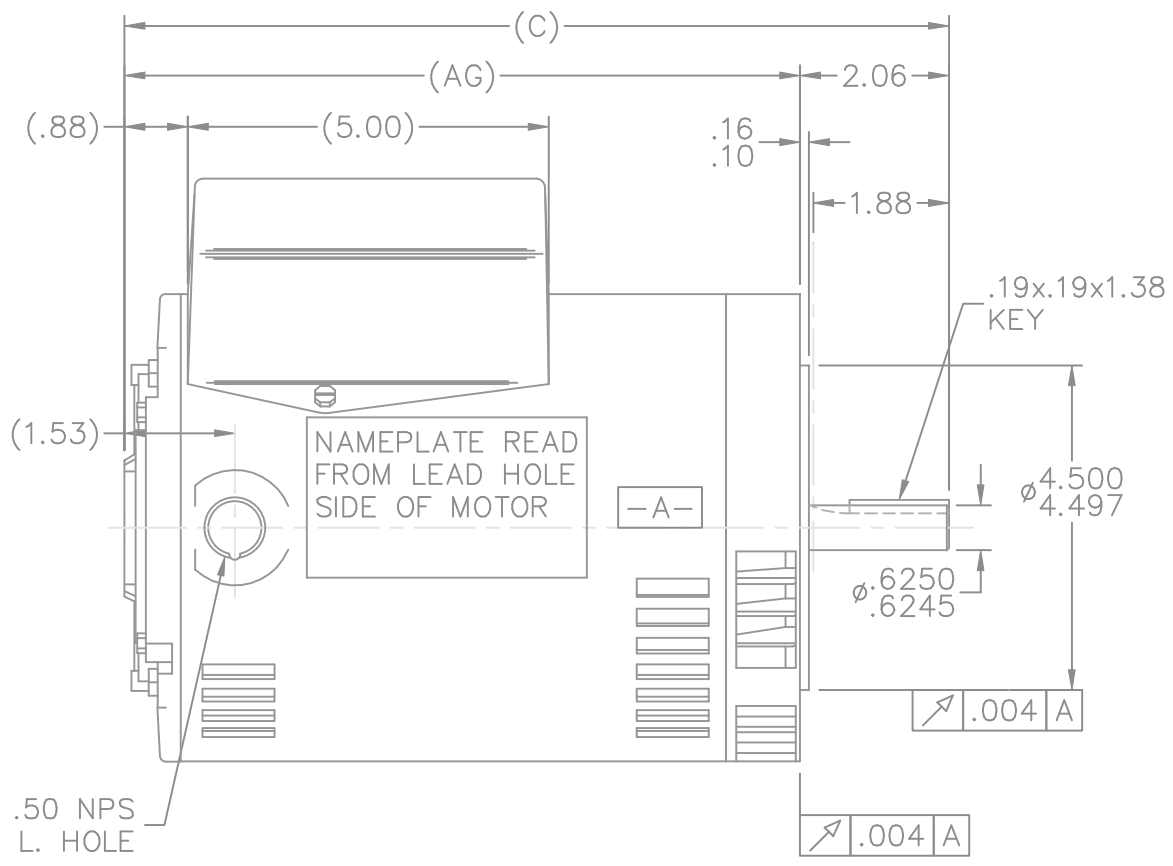
Nameplate Specifications

| | | | |
|------------------------|------------------------------------|----------------------------|-------------------|
| Output HP | 3 Hp | Output KW | 2.2 kW |
| Frequency | 60 Hz | Voltage | 230 V |
| Current | 12.7 A | Speed | 3450 rpm |
| Service Factor | 1.15 | Phase | 1 |
| Efficiency | 81.5 % | Power Factor | 96 |
| Duty | Continuous | Insulation Class | B |
| Design Code | No Design Code | KVA Code | G |
| Frame | 56C | Enclosure | Drip Proof |
| Thermal Protection | Automatic | Ambient Temperature | 40 °C |
| Drive End Bearing Size | 6205 | Opp Drive End Bearing Size | 6203 |
| UL | Recognized (Not Protector) | CSA | Y |
| CE | Y | IP Code | 12 |
| Number of Speeds | 1 | | |

Technical Specifications

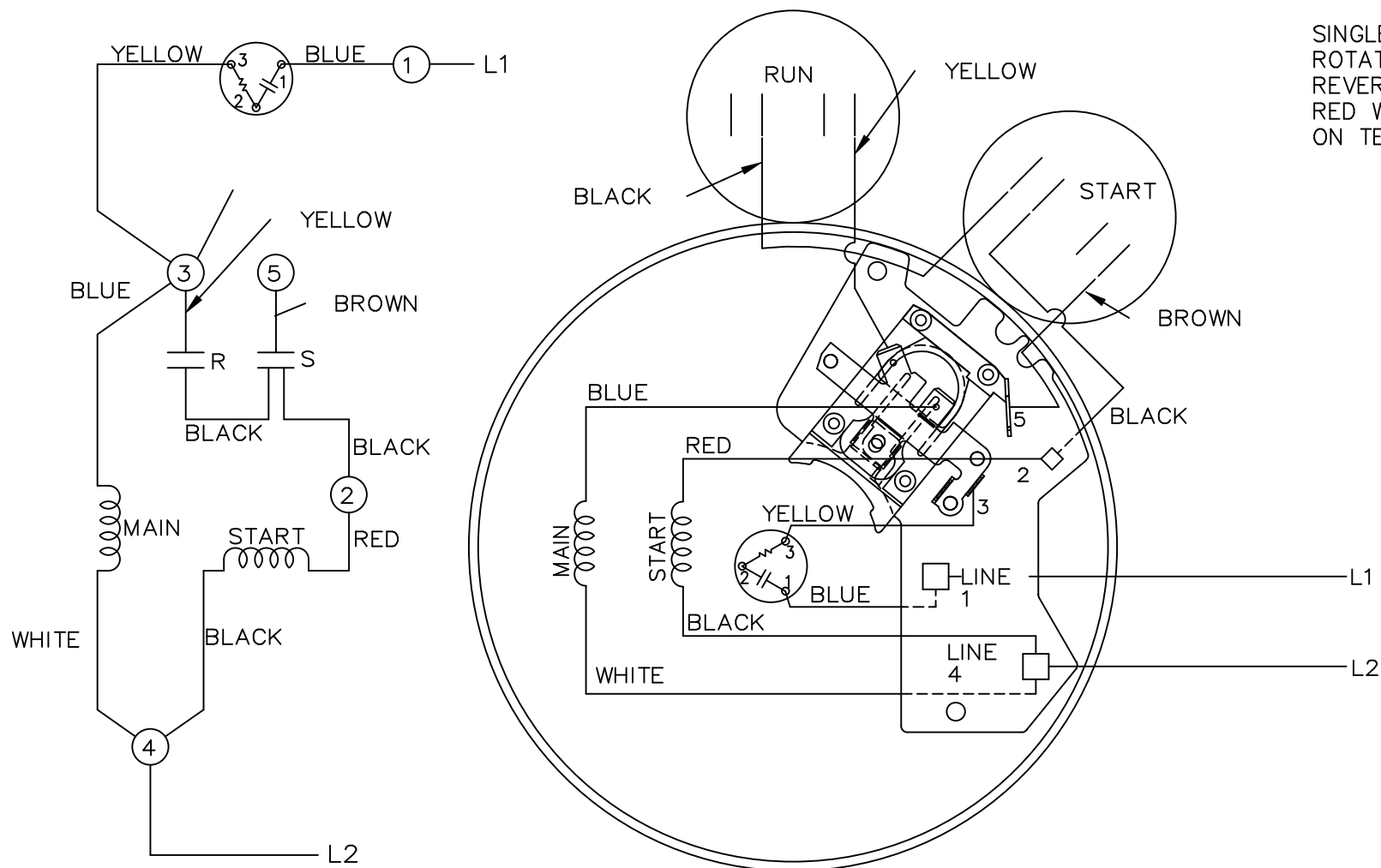
| | | | |
|-----------------------|--------------------------------------|--------------------|-----------------------------------|
| Electrical Type | Capacitor Start Capacitor Run | Starting Method | Across The Line |
| Poles | 2 | Rotation | Selective Counterclockwise |
| Resistance Main | 0 Ohms | Mounting | Round |
| Motor Orientation | Horizontal | Drive End Bearing | Ball |
| Opp Drive End Bearing | Ball | Frame Material | Rolled Steel |
| Shaft Type | T | Overall Length | 11.94 in |
| Shaft Diameter | 0.625 in | Shaft Extension | 1.88 in |
| Assembly/Box Mounting | F1 Only | | |
| Outline Drawing | A-100379-806 | Connection Drawing | 102006-23 |

This is an uncontrolled document once printed or downloaded and is subject to change without notice. Date Created:10/12/2021



| DASH | FR. | C | AG | | DASH | FR. | C | AG | |
|------|------|-------|------|--|------|-------|-------|-------|--|
| | | | | | 806 | 56-80 | 11.94 | 9.87 | |
| 656 | "-65 | 10.44 | 8.37 | | 856 | "-85 | 12.44 | 10.37 | |
| 706 | "-70 | 10.94 | 8.87 | | | | | | |
| 756 | "-75 | 11.44 | 9.37 | | 956 | 56-95 | 13.44 | 11.37 | |

| | | | | | | | |
|--|---------------------------|------------------------|-----|-----------------------------|-----------------|-------------------------------------|--|
| | | | | TOLERANCES UNLESS SPECIFIED | | | DRAWN ML 03-19-1990 CHK FG 03-19-1990 APPD MT 03-20-1990 |
| | | | | DEC. | INCHES | | SCALE 3=8 |
| 3 | REDRAWN IN AUTOCAD | TAT 07-13-2004 | ML | .XX | ±.03 | TITLE OUTLINE | REF |
| 2 | REMOVED 2 VENTS TERM. END | CN 14111 ML 04-02-1992 | | .XXX | ±.005 | 56 FR. - BB - DR.PR. - C' FACE - 1Ø | FMF |
| 1 | NEW DRAWING | 3879237 ML 03-19-1990 | | .XXXX | ±.0005 | MAT'L. | PREV |
| NO. | REVISION | BY & DATE | CHK | ANG | ±7'30" | FINISH | |
| THIS DRAWING IN DESIGN AND DETAIL IS OUR PROPERTY AND MUST NOT BE USED EXCEPT IN CONNECTION WITH OUR WORK ALL RIGHTS OF DESIGN AND INVENTION ARE RESERVED THIS IS AN ELECTRONICALLY GENERATED DOCUMENT - DO NOT SCALE THIS PRINT | | | | RFP | CAD FILE 100379 | SIZE A | DRAWING NO. 100379 |
| | | | | DIST WP | | | PAGE OF 3 |



SINGLE VOLTAGE C.C.W.
 ROTATION SHOWN TO
 REVERSE, INTERCHANGE
 RED WITH BLACK LEADS
 ON TERM. 2 AND

| | | | | TOLERANCES UNLESS SPECIFIED | | MARATHON ELECTRIC | DRAWN CB 05-12-1996 | | | | |
|--|-----------------------------------|--------------|----------------|-----------------------------|--------------------|--------------------------|---------------------|--------|-----------------------|-----------|--------|
| | | | | DEC. | INCHES | | CHK ML 05-15-1996 | | | | |
| | | | | .X | ±.1 | TITLE CONNECTION DIAGRAM | APPD GK 05-15-1995 | | | | |
| | | | | .XX | ±.02 | | SCALE 5=8 | | | | |
| 4 | REVISED ROTATION NOTE | CN 46655 | DRS 03-15-2007 | ML | .XXX | | ±.005 | REF | | | |
| 3 | REDRAWN ON CADD - REV. CAP. LEADS | CN 20775-105 | CB 05-15-1995 | | .XXXX | | ±.0005 | MAT'L. | | | |
| NO. | REVISION | | BY & DATE | CHK | ANG | ±7'30" | PREV | | | | |
| THIS DRAWING IN DESIGN AND DETAIL IS OUR PROPERTY AND MUST NOT BE USED EXCEPT IN CONNECTION WITH OUR WORK ALL RIGHTS OF DESIGN AND INVENTION ARE RESERVED THIS IS AN ELECTRONICALLY GENERATED DOCUMENT - DO NOT SCALE THIS PRINT | | | | RFP | CAD FILE 102006_23 | | | SIZE A | DRAWING NO. 102006-23 | PAGE OF 4 | REV. 4 |
| | | | | DIST | WP | | | | | | |